

## HABITS

### Females:

- Avid biter feeding on man and other mammals.
- Bite during the twilight hours
- Must have a blood meal in order to produce eggs.
- Encountered around swimming pools, or while camping, working in the yard, or during outdoor activities such as a barbeque.

### Males:

- Do not bite.
- Feed on nectar and plant juices.
- Male swarming flights may be observed around twilight.

## ECONOMIC AND MEDICAL IMPORTANCE

- *Does not* appear to be important in the spread of Western Equine Encephalitis (WEE), St. Louis Encephalitis (SLE), or West Nile Virus (WNV).
- Considered to possibly be a transmitter of dog heartworm.

## CONTROL

### Prevention and Corrective Methods:

- Preventing mosquitoes from breeding is the best method.
- Eliminate or modify breeding areas by pumping, ditching, draining.
- Empty water weekly from:



- bird baths

- flower pots



- buckets

- old tires



### Biological Control:

- Stocking mosquito fish in fish ponds, creeks, pools, and livestock watering troughs is an effective preventative measure.
- Other biological control measures are currently being studied by various research institutions.

### Chemical Control:

- Provides only temporary relief and should only be practiced by trained mosquito abatement or health department personnel.
- Insect repellents may be useful if in an area where mosquitoes reside.

# CULISTA INCIDENS

## “Cool Weather” Mosquito



Fresno Mosquito and Vector Control  
District  
2338 E. McKinley Ave.  
Fresno, CA 93707  
(559) 268-6565

Fresno Westside Mosquito Abatement  
District  
2555 N. Street P.O. Box 125  
Firebaugh, CA 93622  
(559) 659-2437

Consolidated Mosquito Abatement  
District  
2425 Floral Avenue  
P.O. Box 278  
Selma, CA 93662  
(559) 896-1085

## GENERAL INFORMATION

- Referred to as the “cool weather” mosquito because it only breeds in cool locations or in spring and the fall seasons in warmer locations.

- Large robust mosquitoes

- Dark brown to black in color

- Tip of the abdomen is blunt, with white cross bands present on all abdominal

segments

- Spotted wings
- Hind legs have narrow white bands which overlap the joints.
- Males have long bushy antennae
- Occurs from Alaska to the Southern California border, primarily west of the Rocky Mountains.
- Females hibernate in the winter



## Life Cycle

Mosquitoes have four distinct life stages. The first three stages are spent in the water.

### 1. Egg

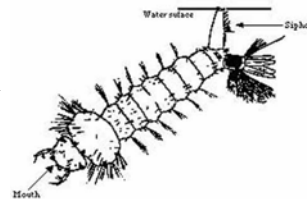
- Lays 150-200 eggs in clusters called “rafts”.



- Rafts float on the surface of the water
- This stage lasts up to two days.

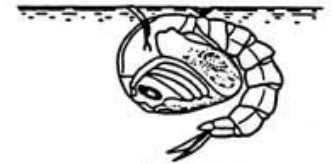
### 2. Larvae

- The eggs hatch into larvae (wigglers).
- Feed on small organic particles and microorganisms in the water.
- Hang from the water surface by the tip of their tail when they feed.
- Common in creeks, fish ponds, abandoned pools, reservoirs, snow pools, brackish water, horse troughs, artificial containers, and even discarded automobile tires.
- This stage lasts up to several weeks.



### 3. Pupa

- The mosquito larva molts into an aquatic pupa (tumbler).
- Only active if it is disturbed.
- This is the “resting” stage of the mosquitoes life.
- This stage lasts up to two days.



### 4. Adult

- Dependent upon temperature and food in the water, development from egg to adult can take up to two to three weeks.
- Life expectancy of an adult female usually ranges between two weeks and a few months.

